

TADANO AERIAL PLATFORM

MODEL : AW-250TG

GENERAL DATA

MAXIMUM PLATFORM FLOOR HEIGHT 25.0 m

MAXIMUM PLATFORM LOADING CAPACITY 450 kg or two (2) persons

BOOM 3-section
9.8 m - 24.2 m

DIMENSIONS

Overall length	approx.	11,510 mm
Overall width	approx.	2,490 mm (axles retracted)
	approx.	3,590 mm (axles extended)
Overall height	approx.	2,710 mm

MASS approx. 17,000 kg

TRAVEL PERFORMANCE

Max. traveling speed	approx.	4.5 km/h
Gradeability (tan θ)	computed	23%

AERIAL PLATFORM SPECIFICATIONS

<u>MODEL</u>	AW-250TG
<u>MAX. PLATFORM FLOOR HEIGHT</u>	25.0 m
<u>MAX. PLATFORM WORKING RADIUS</u>	23.5 m (Load 150 kg)
<u>PLATFORM EQUIPMENT</u>	<p>Made of steel tube Platform inside dimensions (length x width x height) --- 1.5 x 0.75 x 1.1 m</p> <p>Platform swing By a hydraulic cylinder. 120 degrees swing range --- Left 60°, right 60°</p> <p>(OPTIONAL) By a hydraulic motor. 180 degrees swing range --- Left 90°, right 90°</p> <p>Automatic leveling Dual hydraulic cylinders</p>
<u>BOOM</u>	<p>Three-section, fully powered synchronized telescoping boom of box construction. The synchronization system consists of a double-acting hydraulic cylinder, extension and retraction cables.</p> <p>Fully retracted length ---- 9.8 m Fully extended length ---- 24.2 m Extension speed ----- Approx. 62s / 14.4 m</p>
<u>BOOM ELEVATION</u>	<p>By a double-acting hydraulic cylinder fitted with a holding valve.</p> <p>Elevation speed ----- From -12 to +70 degrees in approx. 50s</p>
<u>ROTATION</u>	<p>Rotation of superstructure made by a hydraulic piston motor through worm reduction gear. 360 degrees continuous rotation in either direction on ball bearing rotating ring.</p> <p>Rotation speed, Maximum -- Approx. 0.8 min⁻¹ Tail swing radius ----- Approx. 2.640 m</p>

HYDRAULIC SYSTEM

System is powered by tandem pump driven by a diesel engine mounted on rotating frame.

Hydraulic pump ----- Gear type

Control valves ----- Multiple servo-control valves with integral relief valves. Mounted on rotating frame. Controlled electrically from platform operation console.

Hydraulic oil reservoir -----

Approx. 155 liters

Filter ----- Fitted in return line.

CONTROLS AND MONITORS

Controls of the machine is made either on platform or on rotating frame (lower section).

On platform

Control levers for superstructure rotation, boom telescoping, boom elevation and traveling.

Switches for steering, platform swing, emergency pump, emergency stop, traveling speed mode select, engine throttle, engine start/stop and warning horn.

Monitor lamps for AMC indicator, emergency stop and engine revolution.

On rotating frame

Switches for superstructure rotation, boom telescoping, boom elevation, lower section control, engine throttle, emergency pump, emergency stop and starter switch.

Hour meter and fuel gauge for engine.

Valves for platform leveling adjustment.

Monitor lamps for AMC indicator, engine oil pressure/cooling water temperature/chassis inclination, axle retracted, emergency stop, battery charging and engine preheat.

At chassis

A lever for axle extension/retraction.

AUTOMATIC CONTROL SYSTEM

Gradual speed-up and gradual stop system
Superstructure rotation speed regulator
Elevating speed regulator
Automatic accelerator

SAFETY DEVICES

AMC (Automatic Moment and Motion Controller)
Emergency pump
Emergency stop system
Hydraulic cylinder lock valves
Hydraulic safety valves
Traveling warning buzzer
Superstructure rotation warning buzzer
Foot switch (in platform)
Lower section control switch (on rotating frame)
Automatic travel speed restriction system
Superstructure rotation lock pin
Chassis inclination warning
Extended axle lock pins
Hand guard
Control lever guards
Touch switch
Safety belt attachment
Warning device of engine cooling water temperature and engine oil pressure
Remaining fuel warning device
Hydraulic oil temperature warning device

EQUIPMENT

Elevating cylinder protector
Lower leveling cylinder protector
Platform guards (rubber)

ACCESSORIES

Standard tools
Chocks

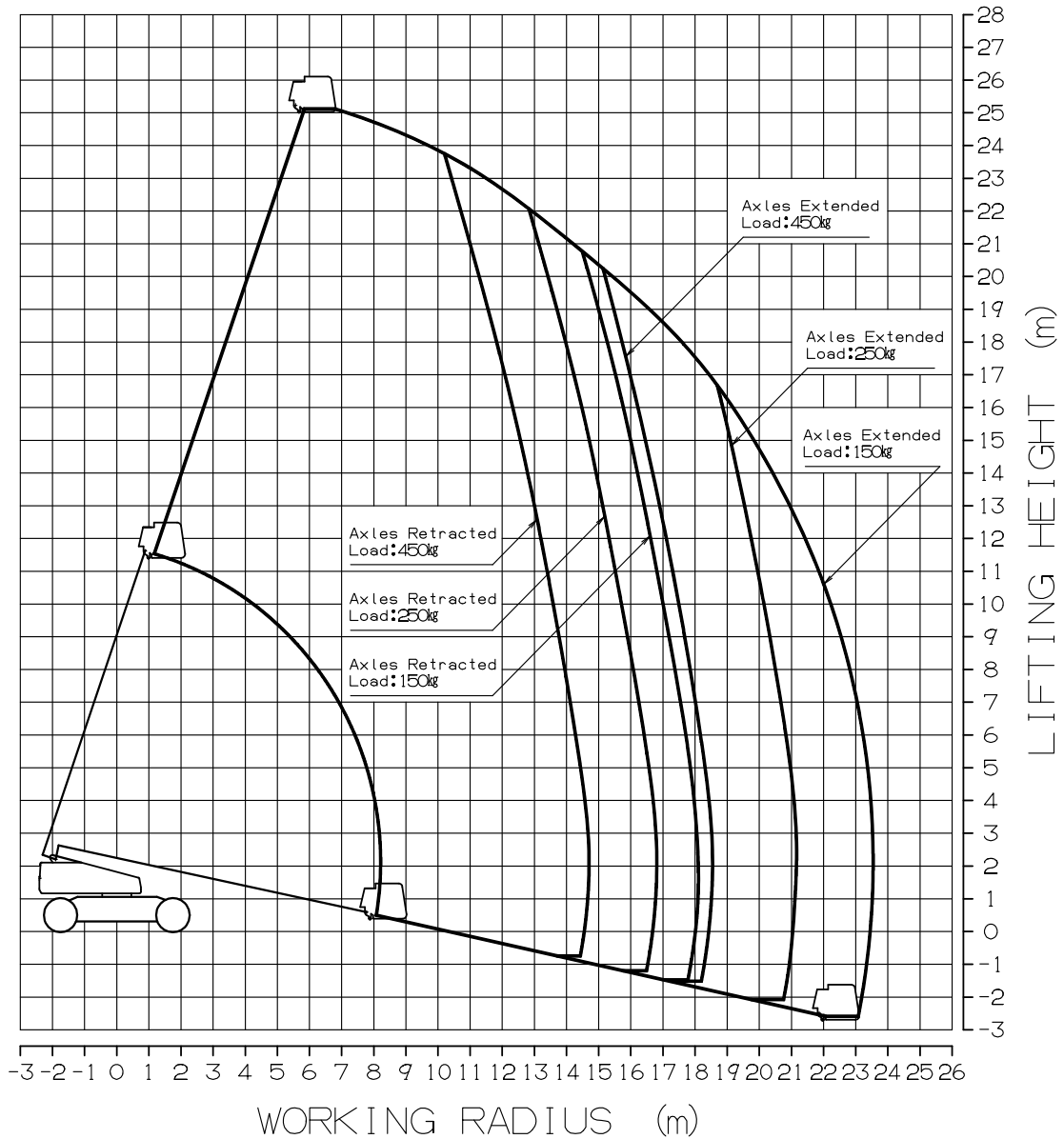
OPTIONAL

Platform vertical and horizontal movement control system
Work light (On platform)
Head guard
Safety belt
Head light
Platform wide swing : 180° (left 90°, right 90°)
By a hydraulic motor
Jack up device for axle extension/retraction
Grease pump

WORKING RANGE

Platform loading capacity :

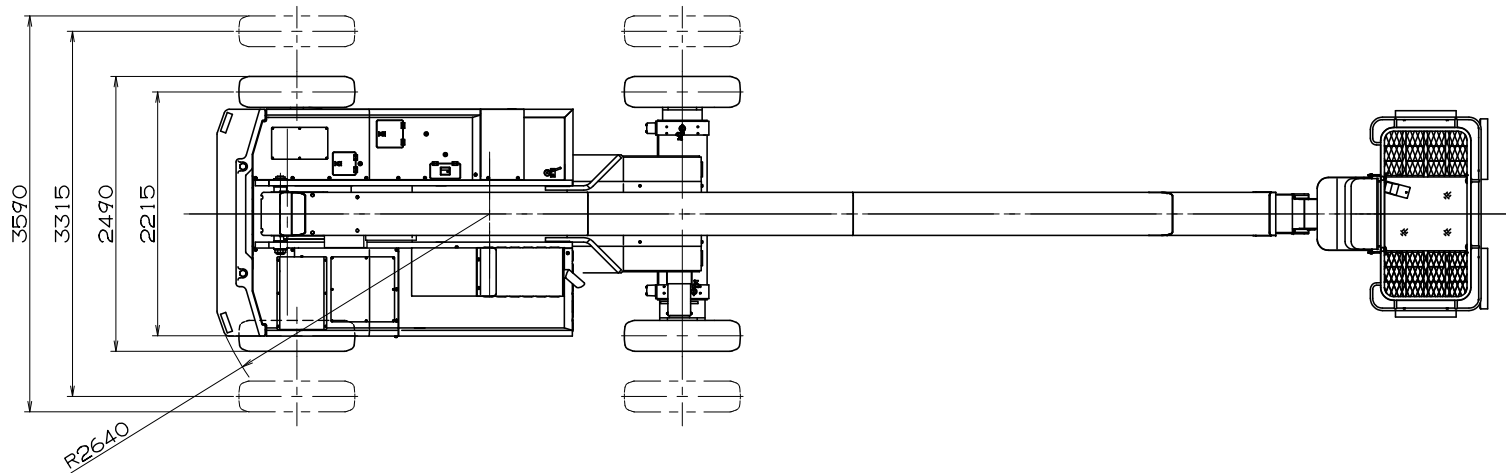
AMC (Automatic Moment and Motion Controller) makes stepless control for loads up to 450 kg maximum.



NOTES:

1. The above working range depends on the condition that the machine is working on firm, level ground surface.
2. The above figure does not include the deflection of the boom and the sink of the tires when loaded.
3. The machine can serve with the same performance in all directions.

EXTERNAL VIEWS



7

